

Subsea Tooling Services Range of Baskets



Subsea Tooling Services has the biggest range of subsea baskets on offer in the North East of Scotland.

Whether the project requires a small Diver Intervention Basket or a large Riser Recovery Basket we have a large stock of all types available for hire.

All our subsea baskets are designed & built to DNV standards and are manufactured by local qualified fabricators to our strict guidelines & designs.

We understand the needs of our clients when it comes to designing a subsea basket, therefore we have come up with an unrivalled range of different types & sizes to accommodate the needs of a busy ROV / Diver support vessel.

If any of our baskets need to be modified to meet the demands of a particular project, we are very flexible and will work with the project to ensure we can come up with a cost effective solution to meet the stated requirements.



Subsea Tooling Services Diver Intervention Basket

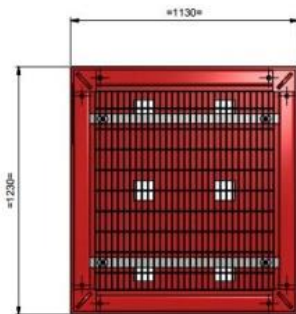


- Constructed in accordance with DNV 2.7/3
- Vented Box Section
- Small deck footprint
- 2 Part Rigging with steel ferrules
- 500 Kg Payload
- Galvanised Floor & Side Grating
- Comes with optional diver toolbox / ROV Lid
- Fitted with gravity base to keep payload free from the seabed

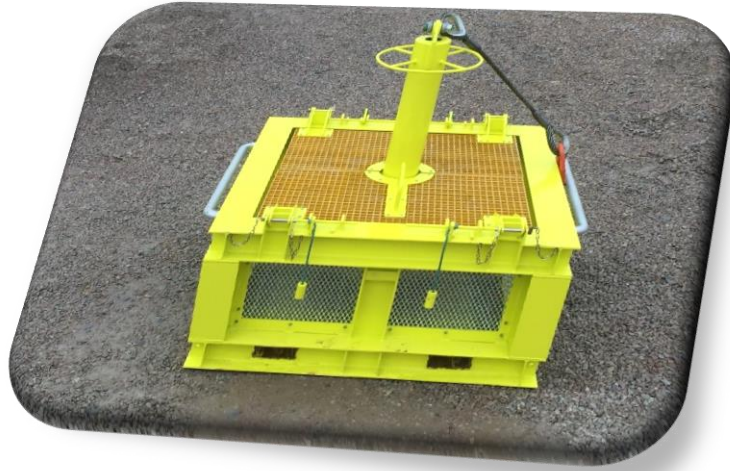
Operational Specification

External Dimensions L x W x H mm	1200mm x 1130mm x 1220mm
Internal Dimensions L x W x H mm	1050mm x 1050mm x 870mm
TARE Load	400 Kg
Payload	500 Kg
Max Gross Weight	900 Kg
Depth Rating	5000 MSW
Certification Class	Built in accordance with DNV 2.7-3
Lifting Height	2240mm
Sling Angle	45 Degrees

The STS Subsea Diver Intervention Basket has been designed to accommodate the needs of a Diver Support Vessel. Built to DNV 2.7/3 and coated with Marine grade paint the Diver Intervention Basket is the ideal solution for the deployment / recovery of small payloads or diver operated hand tools.



Subsea Tooling Services ROV Tooling Basket



- Constructed in accordance with DNV 2.7/3
- H Beam Construction with no box section
- ROV Grab Handles
- Single lift point
- 5000 Kg Payload
- Galvanised Floor & Side Grating
- Can be used in conjunction with the STS *Predator* Range of Dredgers

Operational Specification

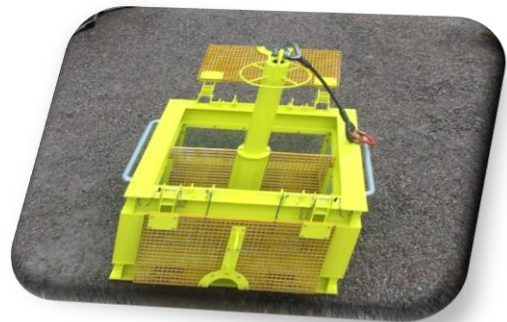
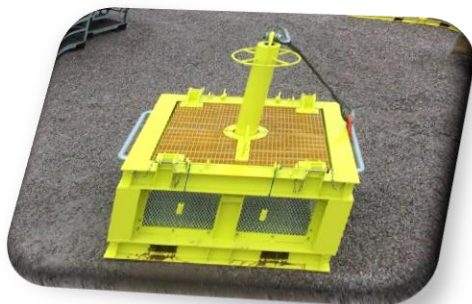
External Dimensions L x W x H mm	2000mm x 2000mm x 2143mm
Internal Dimensions L x W x H mm	1594mm x 1594mm x 797mm
TARE Load	1700 Kg
Payload	5000 Kg
Max Gross Weight	6700 Kg
Depth Rating	5000 MSW
Certification Class	Built in accordance with DNV 2.7-3
Lifting Height	2143mm
Length of sling Pennant	1000mm

The STS ROV Tooling Basket has been designed to accommodate the needs of an ROV / Dive Support Vessel.

Built to DNV 2.7/3 and coated with Marine grade paint and fitted with external ROV grab handles the STS ROV Tooling Basket is the perfect addition to any subsea construction project.

With a high payload the STS ROV Tooling Basket is the ideal solution for deploying / recovering heavy bulky loads.

The STS ROV Tooling Basket is relatively shallow making it easier for the ROV to reach tools. ROV friendly lids come as standard to avoid any tool loss whilst deploying / recovering the basket.



Subsea Tooling Services Subsea Utility Basket



- Fully DNV 2.7/3 Certified (R30)
- Bail Arm lift point with the option of 4 point corner lift
- ROV Grab Handles
- Drop Down Side Door c/w ROV friendly latches
- 5000 Kg Payload
- Fully Stackable
- Can be used in conjunction with the STS *Predator* Range of Dredgers
- Option of ROV friendly lids
- Deck tie down points

Operational Specification

External Dimensions L x W x H mm	2438mm x 2438mm x 1051 (Height with bail arm extended 2013mm)
Internal Dimensions L x W x H mm	238mm x 238mm x 1051mm
TARE Load	1400 Kg
Payload	5000 Kg
Max Gross Weight	6400 Kg
Depth Rating	5000 MSW
Certification Class	DNV 2.7/3 R30
Lifting Height	4300mm to top of slings with bail arm fully extended
Slings Angle	21 degrees

The STS Subsea Utility Basket has been designed to accommodate the needs of an ROV Support Vessel.

Built to DNV 2.7/3 and coated with Marine grade paint and fitted with external ROV grab handles the STS Subsea Utility Basket is the perfect addition to any subsea construction project.

With a high payload the STS Subsea Utility Basket is the ideal solution for deploying / recovering heavy bulky loads.

Fully stackable & with drop down side door with ROV friendly latches.





Subsea Tooling Services Subsea Universal Basket



- Constructed in accordance with DNV 2.7/3
- H Beam Construction with no box section
- ROV Grab Handles
- Option of Bail Arm central lift or 2 x 2 legged wire slings
- 5000 Kg Payload
- Removable shelves which can give up to 4 separate compartments
- Can be used in conjunction with the STS *Predator* Range of Dredgers
- Mud Mat to keep payload free from seabed & add additional weight to basket for increased sea state deployment
- Side & upper hatches giving easy access to all compartments of the basket
- ROV friendly latches

Operational Specification

External Dimensions L x W x H mm	2407mm x 1907mm x 3254mm
Internal Dimensions L x W x H mm	2000mm x 1500mm x 800mm
TARE Load	2000 Kg
Payload	5000 Kg
Max Gross Weight	7000 Kg
Depth Rating	5000 MSW
Certification Class	Built in accordance with DNV 2.7-3
Lifting Height	4254mm
Length of sling Pennant	1000mm (Bail Arm) 2000mm (Sling Set)

The STS Subsea Universal Basket has been designed to accommodate the needs of an ROV / Dive Support Vessel. Built to DNV 2.7/3 and coated with Marine grade paint and fitted with external ROV grab handles the STS Subsea Universal Basket is the perfect addition to any subsea construction project. With a high payload this basket is the ideal solution for deploying / recovering heavy bulky loads. Internal shelves can be easily fitted or removed to suit the required task.



Subsea Tooling Services Utility MKI Basket



- Constructed in accordance with DNV 2.7/3
- H Beam Construction with no box section
- ROV Grab Handles
- 2 Part Rigging with steel ferrules
- 5000 Kg Payload
- Galvanised Floor & Side Grating
- Can be used in conjunction with the STS *Predator* Range of Dredgers
- Option of ROV friendly lids

Operational Specification

External Dimensions L x W x H mm	2753mm x 2753mm x 1315mm
Internal Dimensions L x W x H mm	2600mm x 2600mm x 1200mm
TARE Load	1500 Kg
Payload	5000 Kg
Max Gross Weight	6500 Kg
Depth Rating	5000 MSW
Certification Class	Built in accordance with DNV 2.7-3
Lifting Height	4795mm
Sling Angle	21 degrees

The STS Subsea Utility MKI Basket has been designed to accommodate the needs of an ROV Support Vessel.

Built to DNV 2.7/3 and coated with Marine grade paint and fitted with external ROV grab handles the STS Utility Basket is the perfect addition to any subsea construction project.

With a high payload the STS Utility MK I Basket is the ideal solution for deploying / recovering heavy bulky loads.



Flying Lead Deployment Basket

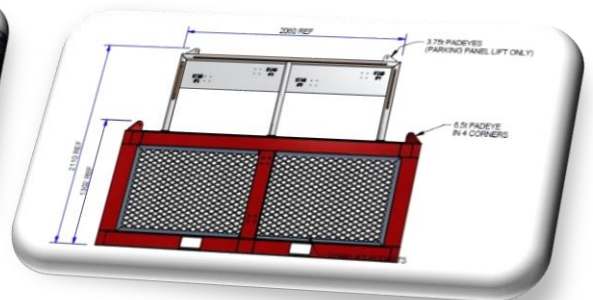


- Constructed in accordance with DNV 2.7/3
- H Beam Construction with no box section
- ROV Grab Handles
- 2 Part Rigging with steel ferrules
- 5000 Kg Payload
- Galvanised Floor & Side Grating
- Option of removable ROV friendly lids / Central Partition / Cable Mounting Head Board

Operational Specification

External Dimensions L x W x H mm	2753mm x 2753mm x 2110mm
Internal Dimensions L x W x H mm	2600mm x 2600mm x 1200mm
TARE Load	1500 Kg
Payload	5000 Kg
Max Gross Weight	6500 Kg
Depth Rating	5000 MSW
Certification Class	Built in accordance with DNV 2.7-3
Lifting Height	4795mm
Sling Angle	21 degrees

The STS Flying Lead Deployment basket is ideally suited for the safe deployment of hydraulic, electrical & fibre optic umbilical's / cables
 A removable head board & central partition will see the basket returned for everyday ROV / Diver operations ideal for launching & recovering large tools.





Subsea Tooling Services MKII Utility Basket



- Constructed in accordance with DNV 2.7/3
- H Beam Construction with no box section
- ROV Grab Handles & safe entry ladder
- 2 Part Rigging with steel ferrules
- 5000 Kg Payload
- Galvanised Floor & Side Grating
- Can be used in conjunction with the STS *Predator* Range of Dredgers
- ROV friendly side & top lockable lids
- Gravity base to keep payload free from seabed

Operational Specification

External Dimensions L x W x H mm	2753mm x 2753mm x 1615mm
Internal Dimensions L x W x H mm	2600mm x 2600mm x 1315mm
TARE Load	2748 Kg
Payload	5000 Kg
Max Gross Weight	7748 Kg
Depth Rating	5000 MSW
Certification Class	Built in accordance with DNV 2.7-3
Lifting Height	5795mm
Sling Angle	21 degrees

The STS Subsea Utility MKII Basket has been designed to accommodate the needs of an ROV / Diver Support Vessel.

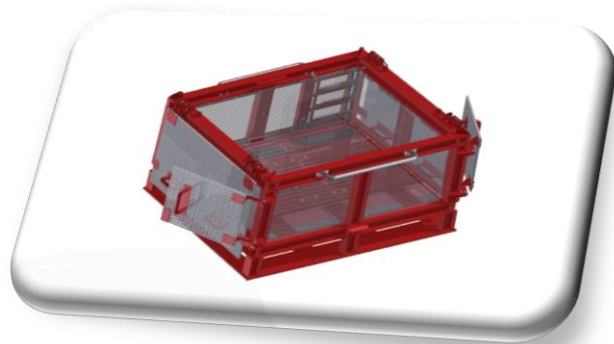
Built to DNV 2.7/3 and coated with Marine grade paint and fitted with external ROV grab handles the STS MK II Utility Basket is the perfect addition to any subsea construction project.

With a high payload the STS Utility MK II Basket is the ideal solution for deploying / recovering heavy bulky loads.

ROV friendly hatches fitted both on top and the side gives easy access to the basket payload and ensure the payload does not get washed out of the basket.

Safe entry / exit ladder ensures safe on deck entry / exit.

Gravity base as standard keeps payloads free from the seabed and adds weight to the basket for rougher sea state deployment.



Subsea Tooling Services High Capacity Utility Basket



- 10' x 8' External
- 1150mm Internal Height
- 7300 Kg Payload
- Built to BSEN12079
- ROV Operable Side Door
- Option of bail arm single lift pennant or 4 part rigging bridle

Operational Specification

External Dimensions L x W x H mm	3079mm x 2454mm x 1533mm
Internal Dimensions L x W x H mm	2723mm x 2130mm x 1200mm
TARE Load	3500 Kg
Payload	7300 Kg
Max Gross Weight	10800 Kg
Depth Rating	5000 MSW
Certification Class	BS-EN12079
Lifting Height	4795mm
Sling Angle	21 degrees

The STS Subsea High Capacity Utility Basket has been designed to accommodate the needs of an ROV Support Vessel.

Built to BSEN12079 and coated with Marine grade paint and fitted with ROV Operable side door

With a high payload the STS High Capacity Utility Basket is the ideal solution for deploying / recovering heavy bulky loads.





Subsea Tooling Services Extra Large Utility Basket



- Constructed in accordance with DNV 2.7/3
- H Beam Construction with no box section
- ROV Grab Handles
- 2 Part Rigging with steel ferrules
- 5000 Kg Payload
- Galvanised Floor & Side Grating
- Can be used in conjunction with the STS *Predator* Range of Dredgers

Operational Specification

External Dimensions L x W x H mm	3400mm x 3400m x 1315mm
Internal Dimensions L x W x H mm	3094mm x 3094mm x 1163mm
TARE Load	2180 Kg
Payload	5000 Kg
Max Gross Weight	7180 Kg
Depth Rating	5000 MSW
Certification Class	Built in accordance with DNV 2.7-3
Lifting Height	5000mm
Sling Angle	45 degrees

The STS Extra-large Utility Basket has been designed to accommodate the needs of an ROV Support Vessel.

Built to DNV 2.7/3 and coated with Marine grade paint and fitted with external ROV grab handles the STS extra-large utility Basket is the perfect addition to any subsea construction project.

With a high payload this basket is the ideal solution for deploying / recovering heavy bulky loads.

Due to the size of this basket Subsea Tooling Services needs 2 days notice prior to collection to inform authorities of a wide load mobilisation.





Subsea Tooling Services Heavy Duty Debris Basket



- Constructed to DNV 2.7/1
- Vented box section for depths to 5000 MSW
- Operating temperature to -20 Degrees C
- 2 Part rigging with steel ferrules
- 10000 Kg Payload
- Galvanised grated floor & side grating
- Can be used in conjunction with the STS *Predator* range of ROV dredgers
- Baskets are stackable 3 x high

Operational Specification

External Dimensions L x W x H mm	6058mm x 2438mm x 1405mm
Internal Dimensions L x W x H mm	5800mm x 2160mm x 1040mm
TARE Load	2260 Kg
Payload	10000 Kg
Max Gross Weight	12260 Kg
Depth Rating	5000 MSW
Certification Class	DNV 2.7/1
Lifting Height	5000 mm
Sling Angle	45 degrees

The STS Subsea Heavy Duty Debris Basket has been designed to accommodate the needs of an ROV / Diver Support Vessel. Built to DNV 2.7/1 and coated with Marine grade paint the STS Heavy Duty Debris Basket is the perfect addition to any subsea construction project where there is a need to deploy / recover heavy payloads up to 10000Kg.





Subsea Tooling Services Heavy Duty Construction Basket



- Constructed to DNV 2.7/1
- Vented box section for depths to 5000 MSW
- Operating temperature to -20 Degrees C
- 4 Part rigging with steel ferrules
- 15300 Kg Payload
- Galvanised grated floor & side grating
- Can be used in conjunction with the STS *Predator* range of ROV dredgers
- Baskets are stackable 3 x high

Operational Specification

External Dimensions L x W x H mm	6058mm x 2438mm x 1370mm
Internal Dimensions L x W x H mm	5800mm x 2160mm x 1040mm
TARE Load	4700 Kg
Payload	15300 Kg
Max Gross Weight	20000 Kg
Depth Rating	5000 MSW
Certification Class	DNV 2.7/1
Lifting Height	5600 mm
Sling Angle	45 degrees

The STS Subsea Heavy Duty Construction Basket has been designed to accommodate the needs of an ROV / Diver Support Vessel. Built to DNV 2.7/1 and coated with Marine grade paint the STS Heavy Duty Construction Basket is the perfect addition to any subsea construction project where there is a need to deploy / recover heavy payloads up to 15300Kg.





Subsea Tooling Services Ultra Heavy Duty Debris Basket



- Constructed to DNV 2.7/1
- Vented box section for depths to 5000 MSW
- Operating temperature to -20 Degrees C
- 2 Part rigging per side with steel ferrules
- 12000 Kg Payload
- Galvanised grated floor & side grating
- Can be used in conjunction with the STS *Predator* range of ROV dredgers
- Baskets are stackable 3 x high
- Removable side for ROV access

Operational Specification

External Dimensions L x W x H mm	6954mm x 2763mm x 1430mm
Internal Dimensions L x W x H mm	6700mm x 2510mm x 1050mm
TARE Load	3630 Kg
Payload	12000 Kg
Max Gross Weight	15630Kg
Depth Rating	5000 MSW
Certification Class	DNV 2.7/1
Lifting Height	6530mm
Sling Angle	45 degrees

The STS Subsea Ultra Heavy Duty Debris Basket has been designed to accommodate the needs of an ROV / Diver Support Vessel. Built to DNV 2.7/1 and coated with Marine grade paint the STS Ultra Heavy Duty Debris Basket is the perfect addition to any subsea construction project where there is a need to deploy / recover heavy payloads up to 12000Kg. This basket has a removable side which can be removed subsea making it ideal for the deployment / recovery of electrical or hydraulic flying leads.



Subsea Tooling Services Riser Recovery Basket



- Constructed in accordance with DNV 2.7/3
- H Beam Construction with no box section
- ROV Grab Handles
- 2 Part Rigging with steel ferrules
- 15000 Kg Payload
- Galvanised Floor & Side Grating

Operational Specification

External Dimensions L x W x H mm	10500mm x 2560mm x 1665mm
Internal Dimensions L x W x H mm	10366mm x 2356mm x 1259mm
TARE Load	5500 Kg
Payload	15000 Kg
Max Gross Weight	20500 Kg
Depth Rating	5000 MSW
Certification Class	Built in accordance with DNV 2.7-3
Lifting Height	7239mm
Sling Angle	25 degrees

The STS Subsea Riser Recovery Basket has been designed to accommodate the needs of an ROV Support Vessel.

Built to DNV 2.7/3 and coated with Marine grade paint and fitted with external ROV grab handles the STS Riser Recovery Basket is the perfect addition to any subsea construction project involved with recovering large amounts of riser / drill pipe from the sea floor.

With a high payload the STS Riser Recovery Basket is the ideal solution for deploying / recovering long bulky payloads.

